

GENERAL INSTRUCTIONS AND CAUTIONS

Note: When welding, attach welder ground only to Hydra-Bed, not to truck frame. Use low-hydrogen rod or wire electrode. NEVER weld to the frame of the truck. Correct installation of the Level-Lok system assures Front to Rear and Side to Side leveling as well as Left to Right centering of the Hydra-Bed. Never obstruct factory overload spring mounting locations.

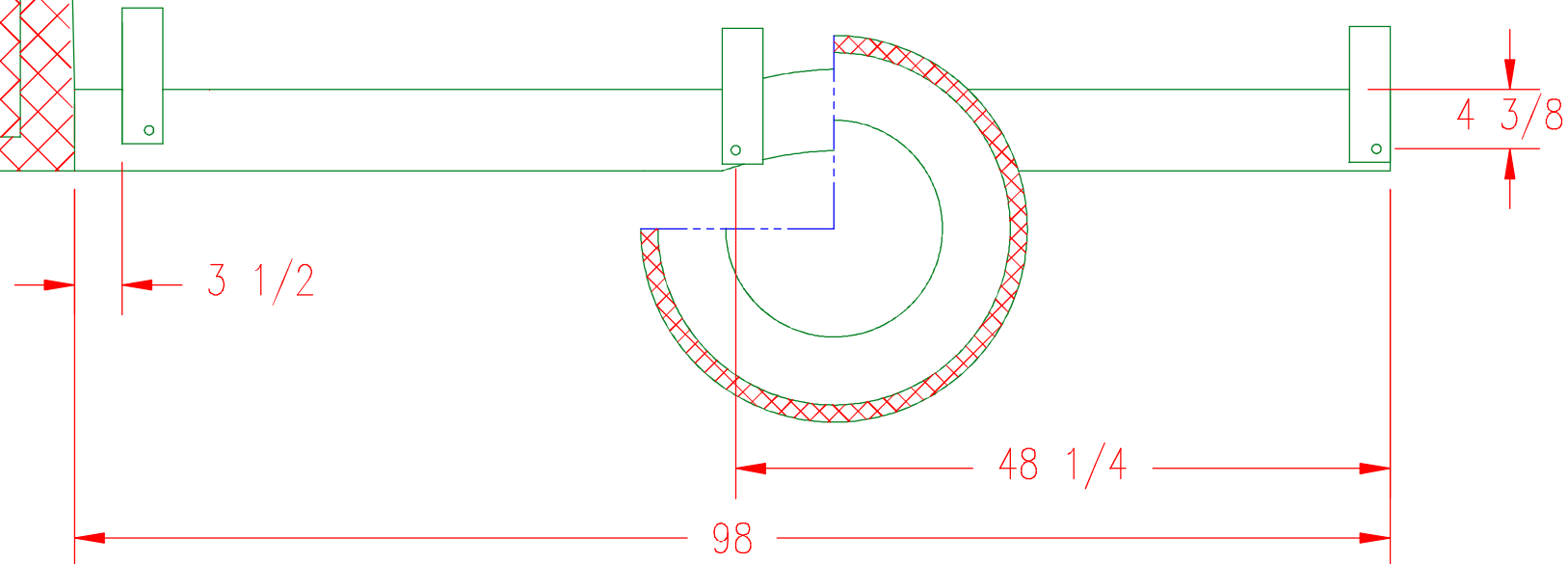
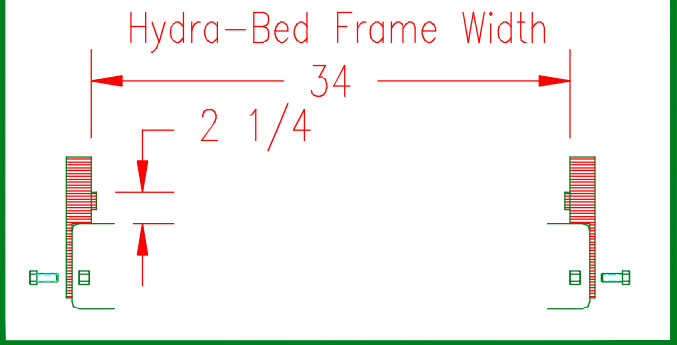
When drilling truck frame, do not damage any part of the braking, fuel or electrical systems.

Place front FLL-3 over truck frame with hole to rear. Locate front edge of FLL-3 approx $3\frac{1}{2}$ " from cab. Mark and drill $\frac{5}{8}$ " hole in truck frame.

Locate center FLL-3 over $\frac{1}{4}$ " pilot hole. Remove plastic wiring clamp, re-secure wiring harness to another location. Drill hole to $\frac{5}{8}$ ".

Locate rear FLL-3 with hole to rear, over $\frac{1}{2}$ " pilot hole. Drill hole out to $\frac{5}{8}$ ".

VIEW OF REAR LEVEL-LOK ON TRUCK FRAME



FLL-3

1980-1997 Ford
56" Cab to Axle Single/Dual Wheel